

MIXED SOCIAL TENNIS CLUB

# MSTC NEWS

[mstctennis.com](http://mstctennis.com)

“WHERE FUN PEOPLE PLAY MIXED DOUBLES”

JUNE—JULY 2009

## PRESIDENT'S MESSAGE

This year is moving along quickly, and, once again, it's time to plan for the next MSTC Board of Directors. We are actively seeking members who are interested in serving on the board during the upcoming term (October 2009 – 2010). A description of all board positions will be posted on our website within the Bylaws of the Club (click on the button). It's a great opportunity to meet and work with the membership. The term starts after the annual meeting and election, which is October 3, 2009. Please contact me by the deadline of September 3 if you have an interest in serving the membership and planning club activities. All positions are open.

Once again we will enjoy the Town & Country Club for MSTC's important annual meeting. Dinner and dancing will follow the business meeting. Details will follow later, but save the date -- October 3 -- on your calendar.

Make plans now to enter the 4<sup>th</sup> of July tournament, known as *The Big Tournament* (July 3-5). Larry Johnson has once again graciously offered his lakeside home for our celebration after the tournament on Sunday, July 5 (details and registration information are on the website and in this newsletter). Many thanks to Larry. M.J. Bredemus will be running this event.

See you on the courts soon!

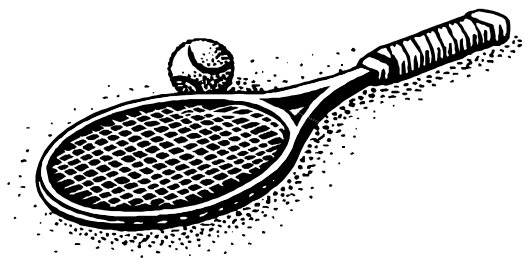
Syble

E-mail: [syblen@mac.com](mailto:syblen@mac.com)

Phone: 651-731-8281

## SOCIAL AND TENNIS EVENTS

- **Friday, July 3 - Sunday, July 5 — The Big Tournament (details inside)**
- **First Thursday of each month (6:30 pm) — MSTC Board meets at Colony Way. Check with Syble (contact information above) to make sure the date has not been changed and for directions**
- **Monday, September 7 — Labor Day Tennis Mixer and Picnic — Round Lake Park, Eden Prairie**



# THE BIG TOURNAMENT

MSTC's Annual Big Tournament is scheduled for Friday, Saturday, and Sunday July 3rd thru July 5th 2009. This popular competitive event will include women's, men's and mixed doubles, as well as men's and women's singles tennis.

**Schedule:** Men's and Women's singles will be played on Friday evening starting at 6:30 pm on July 3rd. Mixed Doubles will be played starting at 9:00 am Saturday morning July 4th, 2008. Men's and Women's Doubles will be held starting 9:00 am Sunday morning July 5, 2008. Check-in at each event will begin 1/2 hour prior to each event. Locations have not yet been decided—players will be notified where to play as soon as possible.

**Social:** As always, the Big Tournament will conclude with a social and an awards ceremony. This will be held Sunday afternoon, starting at 3:00pm, July 5th, 2008 at Larry Johnson's house in Prior Lake (see next page for maps & directions). Awards at 4:30.

**Cost:** See registration form, below. In the event of rain, the tournament will be cancelled and you will receive a refund less the cost of the social (\$10.00)

**Deadline:** This is a popular club event. Sign up now! Make sure you mail your registration form to Mary Jane Bredemus (see below) by Saturday, June 27th.

**Other Information:** If you would like to play doubles, but need a partner, we may be able to match you with someone who needs a partner. You will be called with your start times. Please arrive at least 15 minutes early for your matches.

**Questions:** Call Mary Jane Bredemus at 612-861-2893

## Big Tournament Registration Form

\*Must be a paid member of MSTC to participate in tennis\*

NAME: \_\_\_\_\_ Phone: \_\_\_\_\_ Rating: \_\_\_\_\_

\_\_\_ MIXED DOUBLES: My Partner \_\_\_\_\_ Rating: \_\_\_ I need a partner \_\_\_

\_\_\_ MEN'S DOUBLES: My Partner \_\_\_\_\_ Rating: \_\_\_ I need a partner \_\_\_

\_\_\_ WOMEN'S DOUBLES: My Partner \_\_\_\_\_ Rating: \_\_\_ I need a partner \_\_\_

\_\_\_ MENS or WOMENS SINGLES Rating \_\_\_

\_\_\_ SOCIAL ONLY

\_\_\_ GUEST/S OF MEMBER AT SOCIAL

MEN'S SINGLES  WOMEN'S SINGLES  MIXED DOUBLES  MEN'S DOUBLES

Cost: 1 event and social: \$15 per person; 2 events and social: \$25 per person;

3 events and social:\$30 per person; social only: \$10.00; guest at social: \$10.00

Enclosed is a check payable to MSTC for \$ \_\_\_\_\_

Mail registration form and payment to:

**Mary Jane Bredemus**

**6708 11th Ave So, Richfield, MN 55428**

# BIG TOURNAMENT SOCIAL

Sunday, July 5th, 3:00pm

Larry Johnson, host

15897 Island View Rd NW,

Prior Lake, MN 55372

Food and drinks will be provided.

**\*Bring a chair or blanket to sit on.\***

Reservations necessary.

Take **US-169 SOUTH**

Bear **R** Right onto **CR-18 SOUTH** - go 3.3 mi

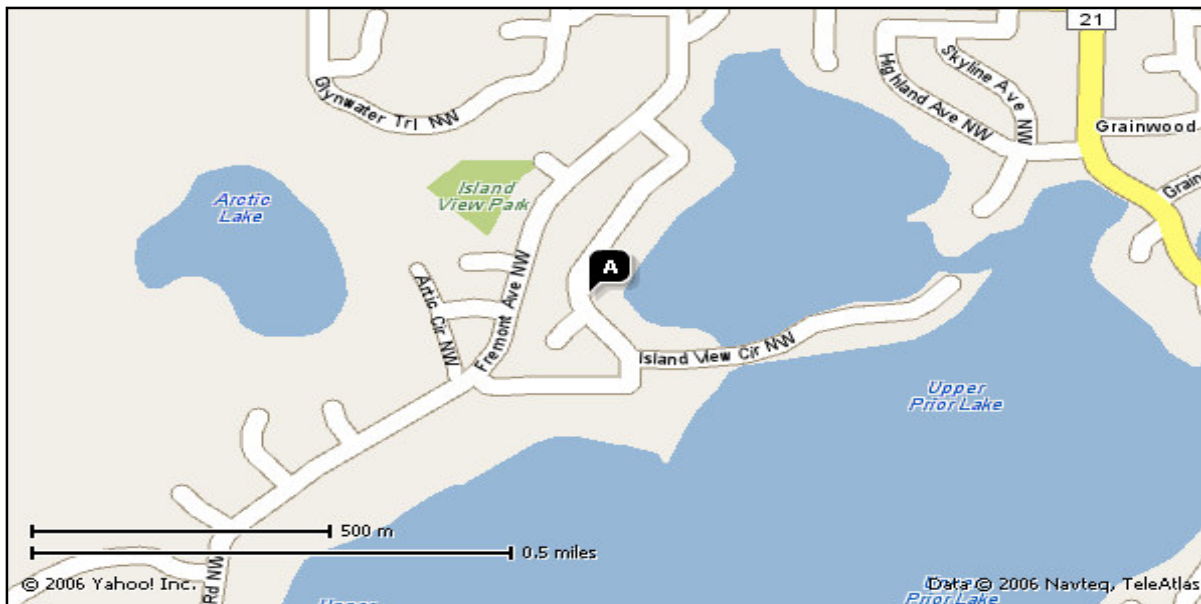
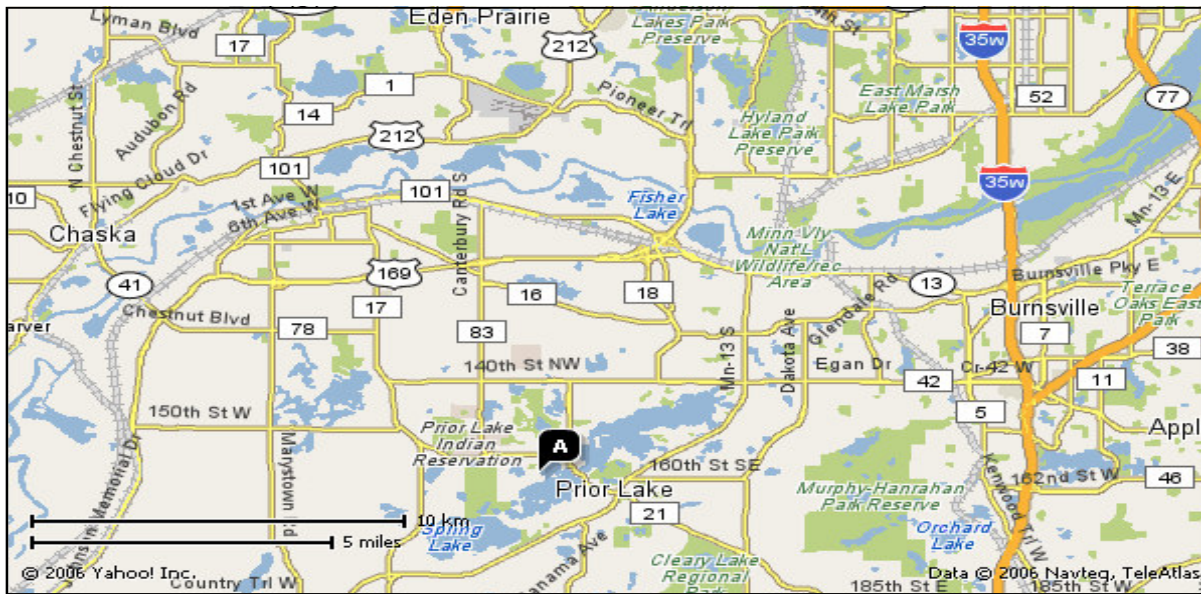
Turn **R** Right on **140TH ST NE** - go 1.5 mi

Turn **L** Left on **EAGLE CREEK AVE NE** - go 1.6 mi

Turn **R** Right on **154TH ST NW** - go 0.4 mi

Turn **L** Left on **FREMONT AVE NW** - go 0.2 mi

Turn **L** Left on **ISLAND VIEW RD NW** - go 0.2 mi



## Labor Day at Round Lake Park

When: September 7 — 12:00 pm until sundown

Where: Round Lake Park Pavilion and Tennis Courts , Eden Prairie

Cost: \$5

What: Rotating partners; mixed doubles social tennis

Picnic starts at 5:00 pm

Bring a dish to share and meat to grill. Paper goods, beverages and charcoal for grilling provided

Directions:

From Highway 494 southbound: take Valley View Road west to Round Lake Park, just past the intersection with Eden Prairie Road. From Highway 494 northbound: take Highway 5 west to Prairie Center Drive. Go north on Prairie Center Drive to Valley View Road. Take Valley View Road west to Round Lake Park.

Questions: Call Jean Carter at 952-432-7252

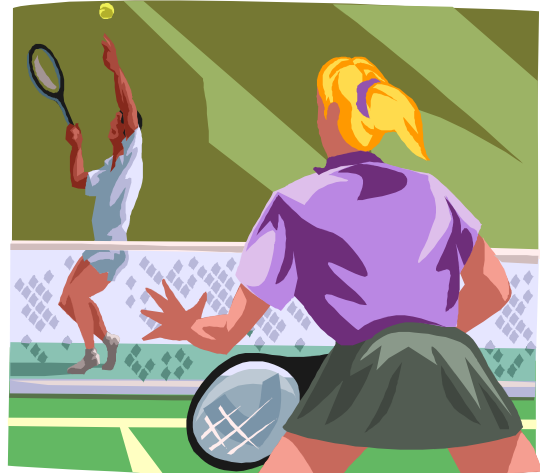
### SIGNUP A FRIEND TODAY!

Consider asking a friend who is interested in playing tennis to join in one of our tennis events. They are welcome to participate in two events and check out our club without having to commit to membership. You can also have them contact MSTC's Membership Director. See the website:

[Mstctennis.com](http://Mstctennis.com)

**Important:** You can help keep our membership directory up-to-date by promptly reporting to Jo any changes in your address (postal or e-mail), phone number, or rating. See the website:

[Mstctennis.com](http://Mstctennis.com)



## ABOUT THE CLUB

For over 30 years, MSTC has provided opportunities for Twin Cities tennis players to meet for year-round tennis events and social activities. We have members at all skill levels and from all walks of life. The club features:

- » Summer outdoor tennis at several convenient locations throughout the metropolitan area.
- » Winter indoor tennis at several convenient locations throughout the metropolitan area.
- » After-tennis fun: Our members almost always go to a nearby restaurant for food, beverages, and conversation.
- » Monthly tennis mixers provide tournament-style play with prizes and the opportunity to socialize with other tennis players.
- » Special events including dinner dances, picnics, new member parties, and an annual club banquet and dance.
- » We are a physically and socially active club. Members use our membership directory to contact friends and organize informal tennis, bike trips, canoeing, golf, skiing, softball, and other social activities.

You can learn more about the club by checking our web site ([www.mstctennis.com](http://www.mstctennis.com)) A membership application can be obtained by contacting our membership director, Jo Janssens through the website or 763-533-3275.

## 2009 OUTDOOR TENNIS SEASON

*Our outdoor season begins in May. Please review the play guidelines and see the outdoor schedule and directions to courts. Hope to see all of you out there!*

### Outdoor Tennis Schedule

<b>Sunday Morning</b>	10 am Hopkins High School and Roseville Middle	4pm Roseville High
<b>Monday Evening</b>	6-8pm at Wayzata Central Middle School and Roseville Middle	
<b>Wednesday Evening</b>	6-8pm at St. Paul Academy & St. Louis Park	
<b>Friday Evening</b>	6-8pm at Roseville, Burnsville High School , & Hopkins High School	

### DIRECTIONS TO OUTDOOR COURTS

**HOPKINS HIGH SCHOOL:** Take Highway 169 to Cedar Lake Road. Go west on Cedar Lake Road about ¾ of a mile to Lindbergh Drive. Take a right on Lindbergh Drive (a stop light). Go past all the schools and you will see the tennis courts on the left side.

**JEFFERSON:** Jefferson High School, Bloomington. Located at France Ave. South and 102nd street. The courts are on the west end of the school, and accessible from 102nd street.

**ROSEVILLE:** Roseville Area Middle School (formerly Kellogg High School). Exit Highway 36 at Rice Street. Go north on Rice to County Road B2, the right (east) on B2 about 1/2 mile. The courts are set back on the left.

Note: When playing Roseville, community tennis events may occasionally require us to play at the older courts on the south side of B2. Later in the season, play may shift to the lighted courts in St Anthony Village.

**ST. LOUIS PARK:** Courts are located behind St. Louis Park High School. Follow Highway 100 to Highway 7 west. Go two blocks to Wooddale Ave. Go North On Wooddale Ave. Wooddale Ave becomes Dakota. Go one block on Dakota and take a left on 33rd Street. Go 1 block and turn into school parking lot.

**ST. PAUL ACADEMY:** (1710 Randolph Ave.) From Highway I-94 take Snelling Avenue south. Go west on Randolph Avenue for three blocks. Turn left on Wheeler Street. The courts are located on corner of Wheeler and Juno.

**WAYZATA CENTRAL MIDDLE SCHOOL:** Take 494 to the County 6 exit. Go west on County 6 to Vicksburg Lane. Go south on Vicksburg lane approximately 1 mile. Go past the school and take the first right turn into the parking lot. Go behind the school up to the tennis courts. There is parking located next to the courts.

**BURNSVILLE HIGH SCHOOL:** Located on Highway 13 East of 35W. North on 12th Ave and left on Riverwood Drive. The tennis courts are on the east side of the high school. They are located behind the Burger King on 13 and 12th Ave.

### OUTDOOR PLAY GUIDELINES

Play one set of nine no-add games. In no-add play, instead of scoring 15-30-40-deuce, the points are 1-2-3-4. This is sometimes called Van Allen scoring. The first couple to score four points wins the game. When the score is 3-3, the service, in mixed doubles, will be to the opponent of the same gender.

- Note: regular scoring may be used if no one is waiting. However, when other members show up or are waiting to play, those on the court should switch to Van Allen scoring for the remainder of the match. In the event there are a large number of persons waiting to play, it is advisable to play a seven instead of the nine games set.
- When your match is complete, rotate off the court and change partners. If there are more players than courts, start a list of member waiting to play. Note: When practical, factor in players skill rating to create more even matches.
- Socialize when waiting for the next match. Make a point to help new members feel welcome. After tennis, members almost always meet at a near by eatery or watering hole. Everyone is welcome.
- Please respect the communities in which we play. Obey local ordinances regarding noise and alcohol use. Pick up extraneous debris on the courts. When playing on public courts, we need to accommodate community residents who wish to use the courts in their community.