

MIXED SOCIAL TENNIS CLUB

MSTC NEWS

mstctennis.com

“WHERE FUN PEOPLE PLAY MIXED DOUBLES”

AUGUST—SEPTEMBER 2009

PRESIDENT’S MESSAGE

Summer is moving by quickly — perhaps too quickly for most of us. We continue to seek members who are interested in serving on the board during the upcoming term (October 2009 – 2010). A description of all board positions is posted on our website within the Bylaws of the Club (click on the button). It’s a great opportunity to meet and work with the membership. All positions are open and we NEED people to fill them if the club is to continue. The term starts after the annual meeting and election, which is October 3, 2009. Please contact me by the deadline of September 3 if you have an interest in serving the membership and planning club activities.

Once again we will enjoy the Town & Country Club for MSTC’s important annual meeting. Dinner and dancing will follow the business meeting. Details will follow later, but save the date -- October 3 -- on your calendar.

See you on the courts soon!

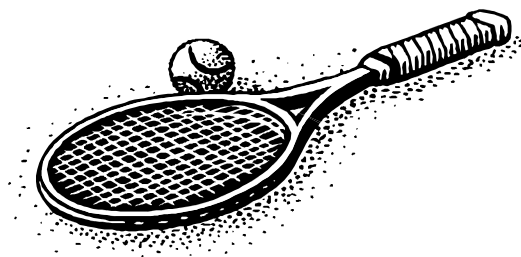
Syble

E-mail: syblen@mac.com

Phone: 651-731-8281

SOCIAL AND TENNIS EVENTS

- **First Thursday of each month (6:30 pm) — MSTC Board meets at Colony Way. Check with Syble (contact information above) to make sure the date has not been changed and for directions**
- **Monday, September 7 — Labor Day Tennis Mixer and Picnic — see details inside**
- **September 20 & 27 — Indoor tennis at Read-Sweatt— see details inside**
- **October 3 — Annual meeting and dinner dance — Town & Country Club, St. Paul**
- **October 4 — Indoor tennis starts: Sundays at Reed Sweat, Minneapolis**
- **October 9 — Indoor tennis starts: Fridays at Life Time Fitness, St. Louis Park**



Big Tournament Results July 4

Unfortunately we had to cancel the men’s and women’s singles and doubles competitions and the social event to be held on July 5 after the tennis because too few people signed up to participate. I know this disappointed many of you as well as the board members who were involved in the planning. Hopefully next year you will register and encourage your friends to join you so we can again hold the “Big Tournament” and enjoy all the fun activities as we’ve done in the past.

We did hold a mixed doubles competition, although the number of participants was much smaller than usual. Winners were:

Upper Division: 1st place: Joan Gustafson and Todd Porter

2nd place: Lisa Nelson and Kevin Burge

Lower Division: 1st place: Linda Weyer and Mike Christian

2nd place: Karen Arlt and Kevin Hamlin

Congratulations, and thanks to all who participated!



Call for New Board Members

As required by MSTC’s bylaws, a nominating committee has been formed to canvass for perspective members for next year’s board of directors. **All positions are open.** Descriptions and our bylaws are posted on MSTC’s website. All members interested in running for the board will be listed on the ballot. The membership will elect the 2009-2010 MSTC board at the annual meeting on October 3 at Town and Country Club.

A few people have already expressed interest in being part of the new board. If more than one person is interested in a particular position, we will include both/all names on the election ballot. Hopefully we will have interest in all the board positions.

Please consider this opportunity as we need new blood and new ideas. Contact MSTC President Syble Nordstrand directly if you are interested in running for the board. Registration deadline is September 3.

Syble’s contact information is:

E-mail: syblen@mac.com

Phone: 651-731-8281



Save the date!!!
Dinner Dance & Annual Meeting
October 3, 2009

The MSTC Annual Meeting and Dinner Dance will be held on October 3, 2009, at the elegant Town and Country Club in St. Paul.

Please plan to attend so you can vote on club leadership and participate in any discussions involving possible bylaw changes or other issues that may be on the agenda. This is your opportunity to ensure the club is the club you want it to be. See Syble’s message for information about serving on the board.

Invitations will be mailed to your address on record. Please return the RSVP portion along with your check for \$25. MSTC is subsidizing the party for members.



Indoors Tennis—Starting in the Fall

While it’s hard to even think about fall during the best part of summer, you should know that the MSTC Tennis Director, Jean Carter, has been making arrangements to ensure you will be able to continue playing tennis when you can no longer use those outside courts.

Contracts have not been finalized, but Sunday afternoon tennis at Read-Sweatt Family Tennis Center will commence October 4. Friday evening tennis at Life Time Fitness, St. Louis Park will start October 9.

Jean plans to have mixed doubles round robin tennis at Read-Sweatt Sundays, September 20 and 27. Watch for details in e-mail notifications nearer these dates.

Labor Day Tennis Mixer & Picnic

When: September 7 — 12:00 pm until sundown

Where: *Hopefully* at Round Lake Park Pavilion and Tennis Courts , Eden Prairie. The city is resurfacing the tennis courts, and they may not be ready. We may need to change the location of this event. Watch for e-mails and check the website before driving to Round Lake Park.

Cost: \$5

What: Rotating partners; mixed doubles social tennis

Picnic starts at 5:00 pm

Bring a dish to share and meat to grill. Paper goods, beverages and charcoal for grilling provided

Directions (*Remember this may change*):

From Highway 494 southbound: take Valley View Road west to Round Lake Park, just past the intersection with Eden Prairie Road. From Highway 494 northbound: take Highway 5 west to Prairie Center Drive. Go north on Prairie Center Drive to Valley View Road. Take Valley View Road west to Round Lake Park.

Questions: Call Jean Carter at 952-432-7252

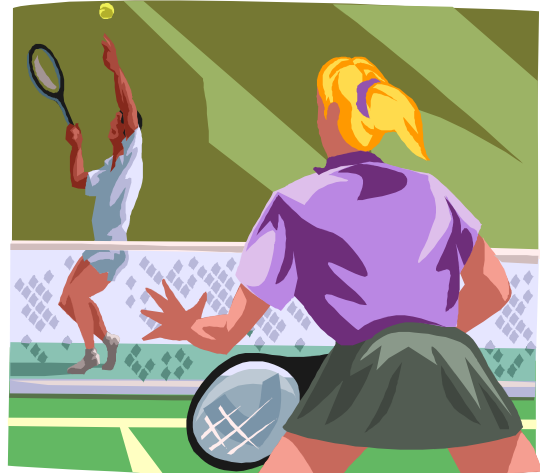
SIGNUP A FRIEND TODAY!

Consider asking a friend who is interested in playing tennis to join in one of our tennis events. They are welcome to participate in two events and check out our club without having to commit to membership. You can also have them contact MSTC's Membership Director. See the website:

Mstctennis.com

Important: You can help keep our membership directory up-to-date by promptly reporting to Jo any changes in your address (postal or e-mail), phone number, or rating. See the website:

Mstctennis.com



ABOUT THE CLUB

For over 30 years, MSTC has provided opportunities for Twin Cities tennis players to meet for year-round tennis events and social activities. We have members at all skill levels and from all walks of life. The club features:

- » Summer outdoor tennis at several convenient locations throughout the metropolitan area.
- » Winter indoor tennis at several convenient locations throughout the metropolitan area.
- » After-tennis fun: Our members almost always go to a nearby restaurant for food, beverages, and conversation.
- » Monthly tennis mixers provide tournament-style play with prizes and the opportunity to socialize with other tennis players.
- » Special events including dinner dances, picnics, new member parties, and an annual club banquet and dance.
- » We are a physically and socially active club. Members use our membership directory to contact friends and organize informal tennis, bike trips, canoeing, golf, skiing, softball, and other social activities.

You can learn more about the club by checking our web site (www.mstctennis.com) A membership application can be obtained by contacting our membership director, Jo Janssens through the website or 763-533-3275.

2009 OUTDOOR TENNIS SEASON

Our outdoor season begins in May. Please review the play guidelines and see the outdoor schedule and directions to courts. Hope to see all of you out there!

Outdoor Tennis Schedule

Sunday Morning	10 am Hopkins High School and Roseville Middle	4pm Roseville High
Monday Evening	6-8pm at Wayzata Central Middle School and Roseville Middle	
Wednesday Evening	6-8pm at St. Paul Academy & St. Louis Park	
Friday Evening	6-8pm at Roseville, Burnsville High School , & Hopkins High School	

DIRECTIONS TO OUTDOOR COURTS

HOPKINS HIGH SCHOOL: Take Highway 169 to Cedar Lake Road. Go west on Cedar Lake Road about ¾ of a mile to Lindbergh Drive. Take a right on Lindbergh Drive (a stop light). Go past all the schools and you will see the tennis courts on the left side.

JEFFERSON: Jefferson High School, Bloomington. Located at France Ave. South and 102nd street. The courts are on the west end of the school, and accessible from 102nd street.

ROSEVILLE: Roseville Area Middle School (formerly Kellogg High School). Exit Highway 36 at Rice Street. Go north on Rice to County Road B2, the right (east) on B2 about 1/2 mile. The courts are set back on the left.

Note: When playing Roseville, community tennis events may occasionally require us to play at the older courts on the south side of B2. Later in the season, play may shift to the lighted courts in St Anthony Village.

ST. LOUIS PARK: Courts are located behind St. Louis Park High School. Follow Highway 100 to Highway 7 west. Go two blocks to Wooddale Ave. Go North On Wooddale Ave. Wooddale Ave becomes Dakota. Go one block on Dakota and take a left on 33rd Street. Go 1 block and turn into school parking lot.

ST. PAUL ACADEMY: (1710 Randolph Ave.) From Highway I-94 take Snelling Avenue south. Go west on Randolph Avenue for three blocks. Turn left on Wheeler Street. The courts are located on corner of Wheeler and Juno.

WAYZATA CENTRAL MIDDLE SCHOOL: Take 494 to the County 6 exit. Go west on County 6 to Vicksburg Lane. Go south on Vicksburg lane approximately 1 mile. Go past the school and take the first right turn into the parking lot. Go behind the school up to the tennis courts. There is parking located next to the courts.

BURNSVILLE HIGH SCHOOL: Located on Highway 13 East of 35W. North on 12th Ave and left on Riverwood Drive. The tennis courts are on the east side of the high school. They are located behind the Burger King on 13 and 12th Ave.

OUTDOOR PLAY GUIDELINES

Play one set of nine no-add games. In no-add play, instead of scoring 15-30-40-deuce, the points are 1-2-3-4. This is sometimes called Van Allen scoring. The first couple to score four points wins the game. When the score is 3-3, the service, in mixed doubles, will be to the opponent of the same gender.

- Note: regular scoring may be used if no one is waiting. However, when other members show up or are waiting to play, those on the court should switch to Van Allen scoring for the remainder of the match. In the event there are a large number of persons waiting to play, it is advisable to play a seven instead of the nine games set.
- When your match is complete, rotate off the court and change partners. If there are more players than courts, start a list of member waiting to play. Note: When practical, factor in players skill rating to create more even matches.
- Socialize when waiting for the next match. Make a point to help new members feel welcome. After tennis, members almost always meet at a near by eatery or watering hole. Everyone is welcome.
- Please respect the communities in which we play. Obey local ordinances regarding noise and alcohol use. Pick up extraneous debris on the courts. When playing on public courts, we need to accommodate community residents who wish to use the courts in their community.