

MIXED SOCIAL TENNIS CLUB
MSTC NEWS
mstctennis.com

“WHERE FUN PEOPLE PLAY MIXED DOUBLES”

APRIL 2009

Editor's Notes

M.S.T.C.'s winter tennis season is drawing to a close. Outside play will commence when the weather allows. Some of the more hardy members will, no doubt, be shoveling snow from the courts and wondering where the rest of us are... Check the website *often* for current information.

Members will be receiving the 2009 directory soon — visa e-mail is that's how you get the newsletter. If you have not renewed your membership, please call or e-mail Jo Janssens — or better yet: download your application from the website:

mstctennis.com

SOCIAL AND TENNIS EVENTS

Saturday, April 11 — Tennis Mixer at St. Paul Indoor Tennis Club at 7 PM.

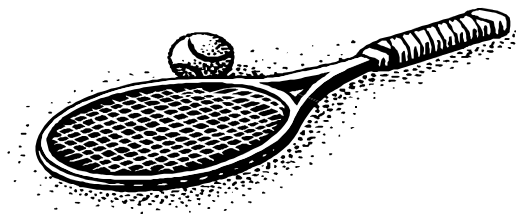
Sunday, April 26 — Last indoor play at Reed Sweatt

Friday, May 8 — Spring Fling Dance — Ramada (former Thunderbird)

Monday, May 25 — Memorial Day Tennis Mixer and Picnic — Round Lake Park, Eden Prairie

Friday, July 3 - Sunday, July 5 — The Big Tournament (details to be announced later)

Please check the website for current information on all activities — mstctennis.com



SPRING FLING DANCE FRIDAY, MAY 8, 2009

8:30 to 12:30 PM (doors open at 8:00 PM)

Ramada MOA (Old Thunderbird)

2300 American Blvd.

Bloomington, Minnesota 55420

Hosted by Touch of Class and Mixed Social Tennis Club

Attire: Dressy

Live Music: *Rockin' Hollywood* playing 8:30 to 12:30

Cost: \$18 at the door

\$13 in advance; get your ticket from a board member or at an event.



Tennis Mixers — for all levels of play!

Pizza Mixers —

Where: St. Paul Indoor Tennis Club
600 Desoto Street, St. Paul

When: April 11 (7-11:00 pm)

Sign-up: Register using our on-line facility....
mstctennis.com.

If this doesn't work for you, call Bob Delany at 320-396-5050 and save your name and number. Assume you're registered unless you hear back.

Cost: \$15 at the door for members. Non-member (only if space is available) pay \$20.

Format: Mixed doubles, rotating partners.
Savoy's pizza and beverages included.

Note: To register on the website, click on the calendar, click on the date, and follow the registration directions. Please remember we count on you to attend when you register. If you don't come, you are still responsible for your cost. We need to have a minimum number registered by the Saturday before the event or we must cancel as these events are expected to cover the cost of the courts and food. Please plan to join the fun and register early!

Memorial Day at Round Lake Park

When: May 25 — 12:00 pm until sundown

Where: Round Lake Park Pavilion and Tennis Courts , Eden Prairie

Cost: \$5

What: Rotating partners; mixed doubles social tennis

Picnic starts at 5:00 pm

Bring a dish to share and meat to grill. Paper goods, beverages and charcoal for grilling provided

Directions:

From Highway 494 southbound: take Valley View Road west to Round Lake Park, just past the intersection with Eden Prairie Road. From Highway 494 northbound: take Highway 5 west to Prairie Center Drive. Go north on Prairie Center Drive to Valley View Road. Take Valley View Road west to Round Lake Park.

Questions: Call Jean Carter at 952-432-7252

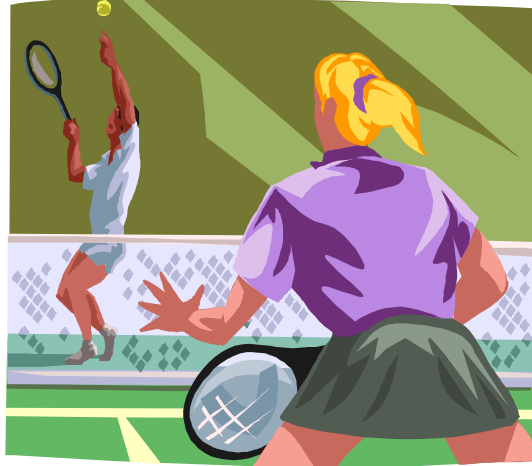
SIGNUP A FRIEND TODAY!

Consider asking a friend who is interested in playing tennis to join in one of our tennis events. They are welcome to participate in two events and check out our club without having to commit to membership. You can also have them contact MSTC's Membership Director. See the website:

Mstctennis.com

Important: You can help keep our membership directory up-to-date by promptly reporting to Jo any changes in your address (postal or e-mail), phone number, or rating. See the website:

Mstctennis.com



ABOUT THE CLUB

For over 30 years, MSTC has provided opportunities for Twin Cities tennis players to meet for year-round tennis events and social activities. We have members at all skill levels and from all walks of life. The club features:

- » Summer outdoor tennis at several convenient locations throughout the metropolitan area.
- » Winter indoor tennis at several convenient locations throughout the metropolitan area.
- » After-tennis fun: Our members almost always go to a nearby restaurant for food, beverages, and conversation.
- » Monthly tennis mixers provide tournament-style play with prizes and the opportunity to socialize with other tennis players.
- » Special events including dinner dances, picnics, new member parties, and an annual club banquet and dance.
- » We are a physically and socially active club. Members use our membership directory to contact friends and organize informal tennis, bike trips, canoeing, golf, skiing, softball, and other social activities.

You can learn more about the club by checking our web site (www.mstctennis.com) A membership application can be obtained by contacting our membership director, Jo Janssens through the website or 763-533-3275.

APRIL PLAY — END OF THE INDOOR SEASON

Sunday (last day is April 26)

4.0 Time: 12:00-2:00pm

Place: Read-Sweatt Family Tennis Center (Nicollet)

Sign up: Reservations may be made beginning on the preceding Sunday after 5 pm by calling Adolf Beckert at 651-735-8799.

REED-SWEATT FAMILY TENNIS CENTER: 4005 Nicollet Ave. South, Minneapolis, MN. From 35W, take 46th Street exit west to Nicollet Avenue. Turn right (north). The tennis dome is on your right at intersection of Nicollet and 40th Street.

Friday

All Levels Time: 7:00-9:00pm

Place: Lifetime Athletic Club (St. Louis Park)

This is over until next fall. Check the website for current tennis information:

mstctennis.com

2009 OUTDOOR TENNIS SEASON

Our outdoor season begins in May. Please review the play guidelines and see the outdoor schedule and directions to courts. Hope to see all of you out there!

Outdoor Tennis Schedule

Sunday Morning	10 am Hopkins High School and Roseville Middle	4pm Roseville High
Monday Evening	6-8pm at Wayzata Central Middle School and Roseville Middle	
Wednesday Evening	6-8pm at St. Paul Academy & St. Louis Park	
Friday Evening	6-8pm at Roseville, Burnsville High School , & Hopkins High School	

DIRECTIONS TO OUTDOOR COURTS

HOPKINS HIGH SCHOOL: Take Highway 169 to Cedar Lake Road. Go west on Cedar Lake Road about ¾ of a mile to Lindbergh Drive. Take a right on Lindbergh Drive (a stop light). Go past all the schools and you will see the tennis courts on the left side.

JEFFERSON: Jefferson High School, Bloomington. Located at France Ave. South and 102nd street. The courts are on the west end of the school, and accessible from 102nd street.

ROSEVILLE: Roseville Area Middle School (formerly Kellogg High School). Exit Highway 36 at Rice Street. Go north on Rice to County Road B2, the right (east) on B2 about 1/2 mile. The courts are set back on the left.

Note: When playing Roseville, community tennis events may occasionally require us to play at the older courts on the south side of B2. Later in the season, play may shift to the lighted courts in St Anthony Village.

ST. LOUIS PARK: Courts are located behind St. Louis Park High School. Follow Highway 100 to Highway 7 west. Go two blocks to Wooddale Ave. Go North On Wooddale Ave. Wooddale Ave becomes Dakota. Go one block on Dakota and take a left on 33rd Street. Go 1 block and turn into school parking lot.

ST. PAUL ACADEMY: (1710 Randolph Ave.) From Highway I-94 take Snelling Avenue south. Go west on Randolph Avenue for three blocks. Turn left on Wheeler Street. The courts are located on corner of Wheeler and Juno.

WAYZATA CENTRAL MIDDLE SCHOOL: Take 494 to the County 6 exit. Go west on County 6 to Vicksburg Lane. Go south on Vicksburg lane approximately 1 mile. Go past the school and take the first right turn into the parking lot. Go behind the school up to the tennis courts. There is parking located next to the courts.

BURNSVILLE HIGH SCHOOL: Located on Highway 13 East of 35W. North on 12th Ave and left on Riverwood Drive. The tennis courts are on the east side of the high school. They are located behind the Burger King on 13 and 12th Ave.

OUTDOOR PLAY GUIDELINES

Play one set of nine no-add games. In no-add play, instead of scoring 15-30-40-deuce, the points are 1-2-3-4. This is sometimes called Van Allen scoring. The first couple to score four points wins the game. When the score is 3-3, the service, in mixed doubles, will be to the opponent of the same gender.

- Note: regular scoring may be used if no one is waiting. However, when other members show up or are waiting to play, those on the court should switch to Van Allen scoring for the remainder of the match. In the event there are a large number of persons waiting to play, it is advisable to play a seven instead of the nine games set.
- When your match is complete, rotate off the court and change partners. If there are more players than courts, start a list of member waiting to play. Note: When practical, factor in players skill rating to create more even matches.
- Socialize when waiting for the next match. Make a point to help new members feel welcome. After tennis, members almost always meet at a near by eatery or watering hole. Everyone is welcome.
- Please respect the communities in which we play. Obey local ordinances regarding noise and alcohol use. Pick up extraneous debris on the courts. When playing on public courts, we need to accommodate community residents who wish to use the courts in their community.